

THE CHANCELLOR'S ANNUAL FUND NEWSLETTER



AUGUST 2010

ALUMNI GIVE BACK TO SUPPORT STUDENTS

In honour of the late Professor Arthur Bleksley's legacy of outstanding teaching and research, and in celebration of his centenary year of 2008, two of his past students, Professors David Mason and David Sherwell of the Department of Computational and Applied Mathematics, founded the Arthur Bleksley Scholarship Fund in Applied Mathematics.

Mr Paramesan Mathen BSc (2000), BSc (Hons) (2001), who donated to the Scholarship, writes: "I was a recipient of such a scholarship during my time at Wits and know what a difference it makes in terms of not having financial concerns getting in the way of furthering my studies." Paramesan is actively involved with raising funds from his network of alumni.

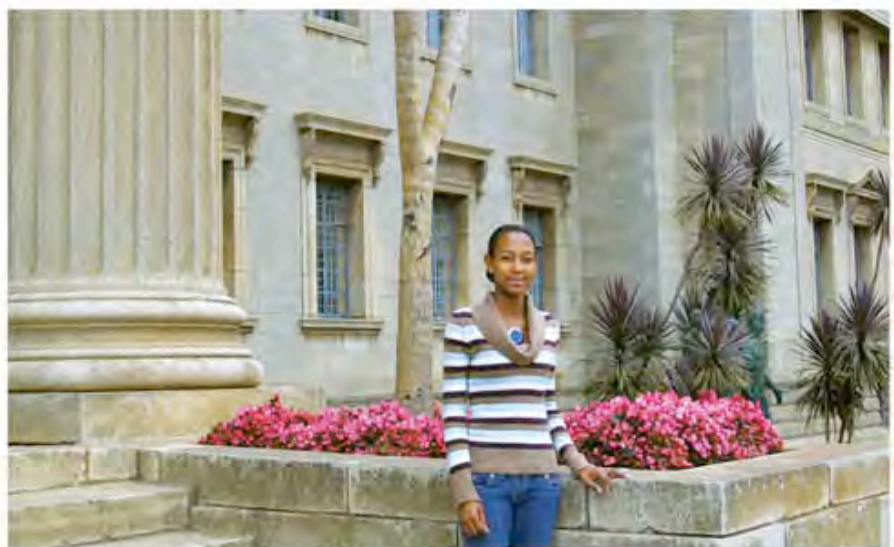
The Pay it Forward Bursary is another example of alumni giving back. On her return to South Africa after spending three years in the United Kingdom, Bianca Brebnor BAcc (2003) created the

Pay it Forward Bursary which follows the principle: if someone does something for you, instead of paying them back, pay it forward to benefit someone else.

Since November 2009, the Pay it Forward Bursary has raised over R47,000 and made its first award in 2010 to Ms Thato Ndlovu, a second year medical student.



Bianca Brebnor



Thato Ndlovu

CHANCELLOR IMPRESSED WITH BUILDING PROJECTS

Wits Chancellor Mr Justice Dikgang Moseneke visited several building projects on campus recently and said he was very impressed with their progress.

During his walk-about to the Chamber of Mines Building, the FNB Commerce Building and the Science Stadium site, Judge Moseneke told Vice-Chancellor Professor Loyiso Nongxa and Director of Development & Fundraising Mrs Heather Regenass, that Wits has been a leader in responding to the Government's call to increase capacity in order to boost the number of much needed Science, Engineering and Technology (SET) students.

The Chancellor also said he was delighted about the role the Chancellor's Annual Fund has played in raising support for these important infrastructural developments.



Wits Chancellor Mr Justice Dikgang Moseneke

RUNNING WITH SCIENCE

The Wits Science Stadium is under construction on our West Campus. Built on the site of the former Charles Skeen Stadium, the structure retains the distinctive oval of the former athletics stadium, and makes use of the substructure of the former grand stand for five new large lecture theatres. This development also includes three laboratories for teaching first year biology, chemistry and physics, a new home for the Mathematical Sciences, and eventually a full Science, Engineering and Technology library.



View of the Science Stadium under construction

THE CHANCELLOR'S ANNUAL FUND REACHES NEW HEIGHTS

The Chancellor's Annual Fund gives alumni the opportunity to support a variety of University projects including buildings, libraries, bursaries and faculties of their choice. By the end of June 2010, alumni had contributed a total of R2.38 million since the Fund began in 2008.

The Fund has been instrumental in supporting the "Big 5" Capital Projects.

Thanks to the generous support of both corporate and individual donors, the University has completed the Chamber of Mines 4th Quadrant Engineering Building Project. The beautifully renovated FNB Commerce building, which houses the School of Accountancy, has re-opened for students and staff. Campaigns are gaining momentum for the Wits Arts Museum, the Science Stadium and the School of

Public Health Building.

The Chancellor's Annual Fund also enables alumni to support bursaries and scholarships which is an ever growing need as increasing numbers of Wits students come from disadvantaged communities. The University is extremely grateful to all alumni and friends who support the Chancellor's Annual Fund. Every gift to Wits is a worthwhile and much appreciated investment in the future.

CELEBRATING THE START OF THE WITS ART MUSEUM CONSTRUCTION

Vice-Chancellor Professor Loyiso Nongxa thanked dozens of guests for helping to make the Wits Art Museum (WAM) dream a reality at a celebration function on 27 May 2010.

The renovations to University Corner began on 19 April 2010 and the Museum is due to open to the public by the middle of 2011 if enough funds are raised.

WAM strives to be the leading museum for African art and will showcase diverse works of art, created by artists from South

Africa and Africa. More than 9 000 works of art in the collection will finally have a proper home as part of the first and only permanent exhibition of African art in South Africa. For more information see www.wits.ac.za/wam



Wits Art Museum patron, renowned artist and Wits alumnus William Kentridge, fashion designer and Wits alumna Marianne Fassler & Vice-Chancellor Professor Loyiso Nongxa at the WAM celebration function

Spencer Hodgson and Andrew Murray receive the Wits Art Museum plans from architects Fiona Garson and Nina Coben at the official handover at the building site on 19 April 2010

WHAT WILL YOUR LEGACY BE?

Legacy gifts or bequests have been crucial in contributing to the growth of the University. The Wartenweiler Library and the Richard Ward Building are two examples of projects made possible due to people making provision in their wills.

A legacy gift to Wits enables the University to continue its position as a leading university in South Africa, in Africa, and in the world.

Your legacy gift to the University can be used for many things including:

- Funding bursaries/ scholarships for disadvantaged, disabled or outstanding students
- Supporting teaching and research
- Building new buildings
- Equipping laboratories
- Enhancing library collections
- Launching new programmes

Your gift can also be undesignated so that it can assist with the University's priorities at the time. This allows greater flexibility and a way for the University to meet future needs. We welcome the opportunity to talk to alumni and friends who believe in investing in the future.



MEET OUR NEW INDIVIDUAL DONOR RELATIONS OFFICER

Cindy Petersen joined the Development and Fundraising team as the Donor Relations Officer in April 2010. Cindy is a Wits graduate having completed a BA degree in 1997 and a BA Honours in (Applied Linguistics) (1998). For the past seven years Cindy worked as Senior Grants Officer for Tshikululu Social Investments and The Oppenheimer Memorial Trust.



Cindy Petersen

For more information on the Chancellor's Annual Fund or the Development & Fundraising Office, please contact Cindy Petersen at 011 717-9703 or
E-mail: cindy.petersen@wits.ac.za
or see www.witsfoundation.co.za